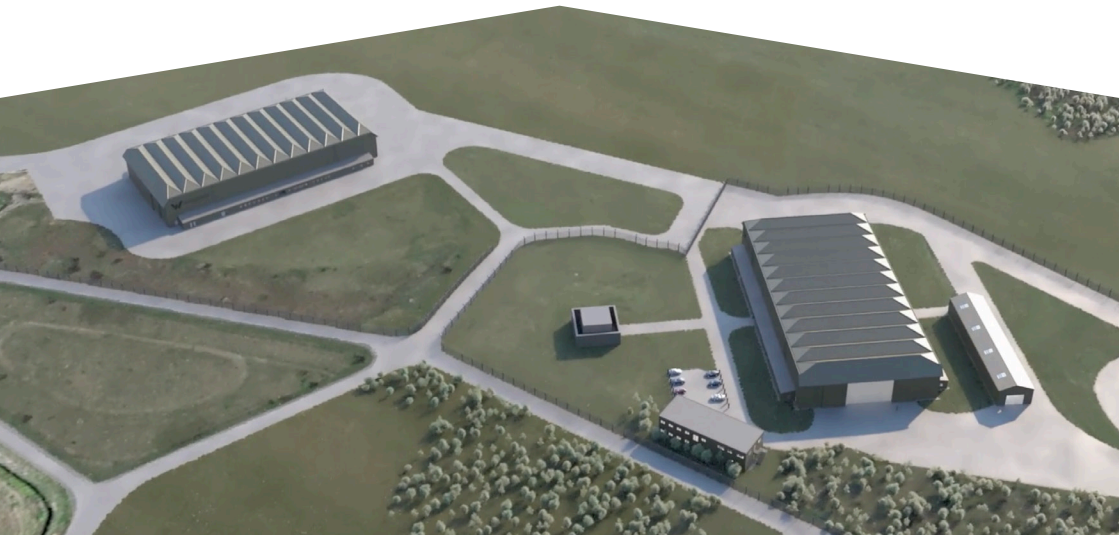
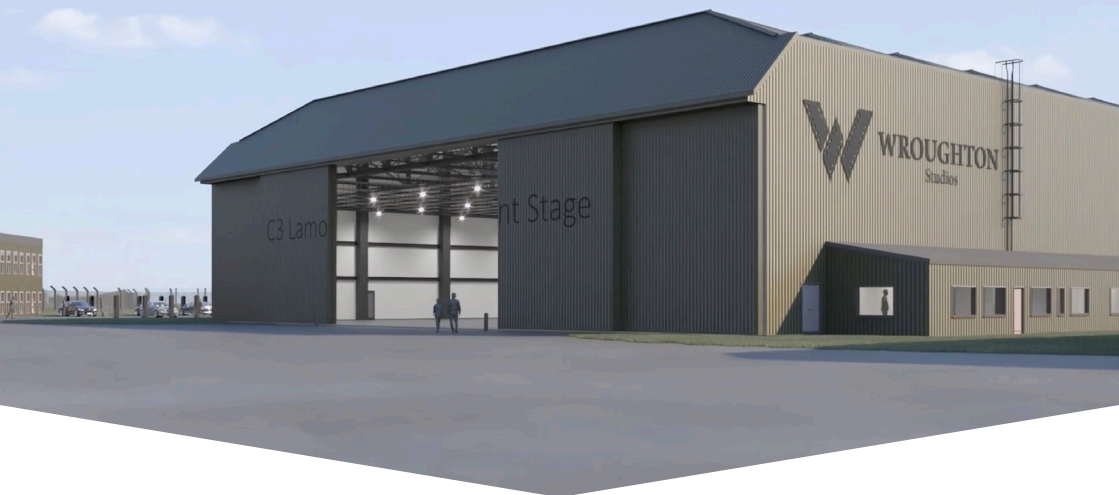


WROUGHTON

Studios

EXCLUSIVELY AVAILABLE VIA THE BASE CAMP CO.
PHASE 1 COMING SPRING 2024





SERVICING THE GLOBAL MEDIA INDUSTRY

The Base Camp Co. is excited to join forces with Wroughton Studios, a brand new film studio facility situated at the Science and Innovation Park in North-Wiltshire, close to the M4, in the heart of the UK.

The site will offer multiple 48,000 Sq. ft. sound stages, alongside purpose built production offices and workshops. With access to over 200 acres of backlot space, in addition to 2,000m of runways, roads and hardstanding, the studio will offer a unique, flexible setting for blockbuster productions.

As the exclusive booking and management partner, The Base Camp Co. will provide production liaison from the initial enquiry to the last day of shooting and beyond.





STAGES

48,000 Sq. Ft.

Wroughton Studios' stages provide approximately 48,000 sq. ft. of internal build space with height clearance of over 40ft. All stages are coupled with 8,250 sq. ft. of workshop space and over 11,000 sq. ft. of production offices. As the site expands into Phase 2, additional studio space and production facilities will be added, making Wroughton Studios the UK's most exciting new filmmaking facility.

Capacity

	METERS	FEET
Width	48	154
Length	92	301
Height	12.5	41

Lifting Beams

	LBS	KG
Beam Loads	1,322	6,000

Stage Doors

	METERS	FEET
Hangar Doors		
Width	8	26
Height	9	30

Other Information

Floor Composition	Concrete
Electrical Capacity	3 Phase 800 Amps
Heating	Blow Heating 203kw
Fire Protection	Fire Alarm Sensors
Water	Dry Stage



RUNWAYS & PRIVATE ROADS

2,000m

With over 2,000m of runway space on site, Wroughton Studios provides safe and flexible settings for driving sequences and stunt work, as well as hard-standing platforms for exterior set builds. Wroughton also boasts an extensive selection of controllable private roads within the studio site, perfect for filming on the move.

Runway 09/27

	METERS	FEET
Length	1,112	3,648
Width	46	150

Runway 16

	METERS	FEET
Length	395	1,296
Width	46	150

Runway 22

	METERS	FEET
Length	528	1,732
Width	46	150





BACKLOT

200 acres

With well over 200 acres of available backlot space offering a variety of picturesque backdrops and uninterrupted horizon lines, Wroughton Studios has extensive options for location filming and large scale exterior builds within the site.

Available backlot spaces incorporate a variety of surfaces and terrain including hard standing, woodland and grass areas forming the perfect canvas for exterior filming. Conveniently located adjacent to the stages, the backlot provides filmmakers with exclusive, secure settings and creative freedom.





LOCATION

Located 10 minutes away from Swindon mainline station and adjacent to one of the UK's main logistical arteries the M4 motorway. Wroughton Studios provides easy access to London Heathrow a journey that can be completed within an 1 hour and 10 minutes by car, with the site also facilitating air taxis.

ENQUIRE NOW

Phone: +44 (0)203 369 2273

Email: wroughtonstudios@thebasecampco.com

Website: www.thebasecampco.com/wroughtonstudios

Address:

Wroughton Studios
Science and Innovation Park Red Barn Gate
Red Barn, Wroughton
Wiltshire, SN4 9LT

what3words: ///starts.wells.kind



WROUGHTON
Studios